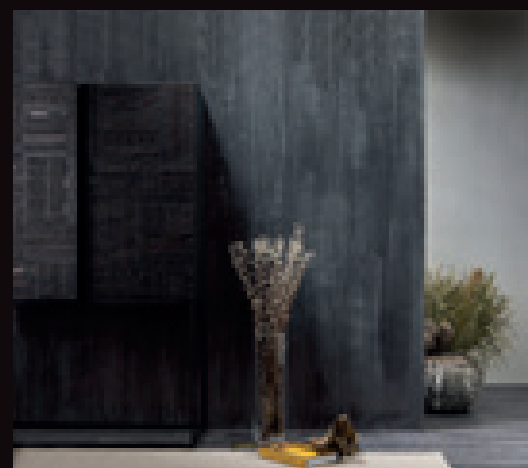
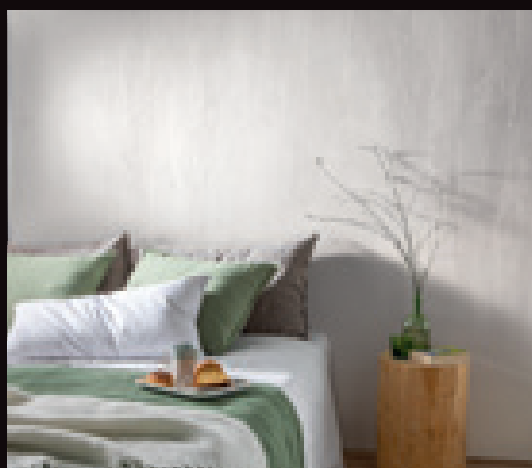


S P A T U L A

STUHHI

HIGH LIGHT



Trentesima Edizione

GIORGIO GRAESAN
and Friends

S P A T U L A

STUHHI

HIGH LIGHT

High Light reinterpreta il tradizionale metodo applicativo di Spatula Stuhhi in un rinnovato linguaggio verticale. Applicato in due mani colorate in pasta dona slancio alla parete trasformando il muro in una superficie **sofisticata e morbida al tatto**. Disponibile anche nella versione Variopinto dove la prima mano di prodotto a tinta unita viene ricoperta da una seconda mano a tre colori.

High Light reinterprets the traditional applicative method of Spatula Stuhhi in a renewed vertical language. Applied in two coats of color, it revives the wall, transforming it into a **sophisticated, soft surface**. Also available in the Variopinto version where the first coat of solid color is covered with a second coat in three colors.

High Light réinterprète la traditionnelle méthode d'application de Spatula Stuhhi dans un langage vertical renouvelé. Appliqué en deux couches colorées dans la pâte, il donne de l'élan au mur, qui devient une surface **sophistiquée et douce au toucher**. Disponible également dans la version Variopinto, où la première couche de produit en teinte unie est recouverte d'une seconde couche à trois couleurs.

High Light interpretiert die traditionelle Applikationsmethode von Spatula Stuhhi durch den erneuerten vertikalen Ausdruck. Wenn dieses Produkt in zwei farbigen Schichten Paste aufgetragen wird, verleiht es der Wand Schwung und verwandelt die Mauer zu einer **ausgefeilten und bei der Berührung weichen** Oberfläche. In der Version Variopinto verfügbar, bei der die erste Produktschicht von einer zweiten dreifarbigem Schicht abgedeckt wird.

High Light reinterpreta el tradicional método de aplicación con Espátula Stuhhi en un renovado lenguaje vertical. Aplicado en dos capas de pasta coloreada, le confiere cierta elevación a la pared, transformando el muro en una superficie **sofisticada y suave al tacto**. También disponible en la versión Variopinto, donde la primera capa de producto de un solo color se recubre con una segunda capa de tres colores.

High Light reinterpretează metoda de aplicare a produsului Spatula Stuhhi într-un limbaj vertical reîmprospătat. Aplicat în două rânduri colorate sub formă de pastă, conferă suplețe peretelui, transformându-l într-o suprafață **sofisticată și moale la atingere**. Disponibil și în versiunea Variopinto, la care primul strat de produs sub formă de vopsea monocromă este acoperit de un al doilea strat în trei culori.

High Light ερμηνεύει τη παραδοσιακή μέθοδο εφαρμογής Spatula Stuhhi με μια ανανεωμένη κάθετη γλώσσα. Εάν εφαρμοστεί με δυο χρωματιστά χέρια σε πάστα χαρίζει δυναμική στο τοίχωμα μετατρέποντας το τοίχο σε μια επιφάνεια **προηγμένη και απαλή στην αφή**. Διατίθεται και στην έκδοση Variopinto όπου το πρώτο χέρι μονόχρωμου προϊόντος καλύπτεται από ένα δεύτερο χέρι με τρία χρώματα.

CALCE E PIETRA...
solo natura





V E R T I C A L E
HIGH LIGHT

S2 GF

Colori fotografici ed indicativi - Photographie und hinweisende Farben - Colores fotográficos y sugerentes - Culoi fotografice și sugerate - Φωτογραφικά και προτεινόμενα χρώματα.





V E R T I C A L E
HIGH LIGHT

Spatula Stuhhi 1001



Colori fotografici ed indicativi - Photographie and suggested colours - Couleurs photographiques et indicatives - Fotografische und hinweisende Farben - Colores fotográficos y sugerenteis - Culoi fotografice și sugerate - Φωτοχρωματικά και προτεινόμενα χρώματα.



V E R T I C A L E
H I G H L I G H T

S2 SC

S4 SC

Colori fotografici ed indicativi - Photographie and suggested colours - Couleurs photographiques et indicatives - Fotografische und hinweisende Farben - Colores fotográficos y sugerenciais - Culoari fotografice și sugerate - Φωτογραφικά και προτεινόμενα χρώματα.





V E R T I C A L E
HIGH LIGHT

S2 NS



Colori fotografici ed indicativi - Photographie and suggested colours - Couleurs photographiques et indicatives - Fotografische und hinweisende Farben - Colores fotográficos y sugeridos - Culoiri fotografice și sugerate - Φωτογραφικά και προτεινόμενα χρώματα.

169 colori

visiona la gamma completa a pag. 21



S3 NB



S3 GF



S4 AM



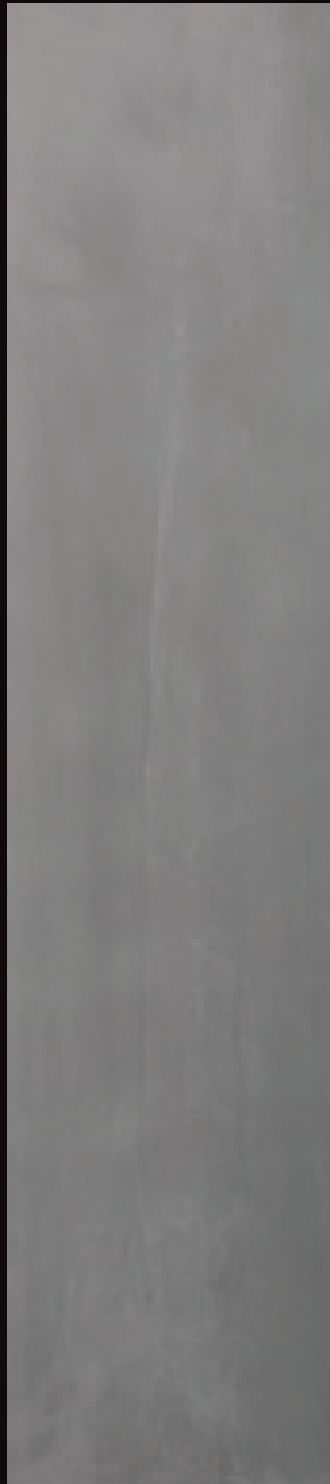
S2 KC

SUGGERIMENTI CROMATICI

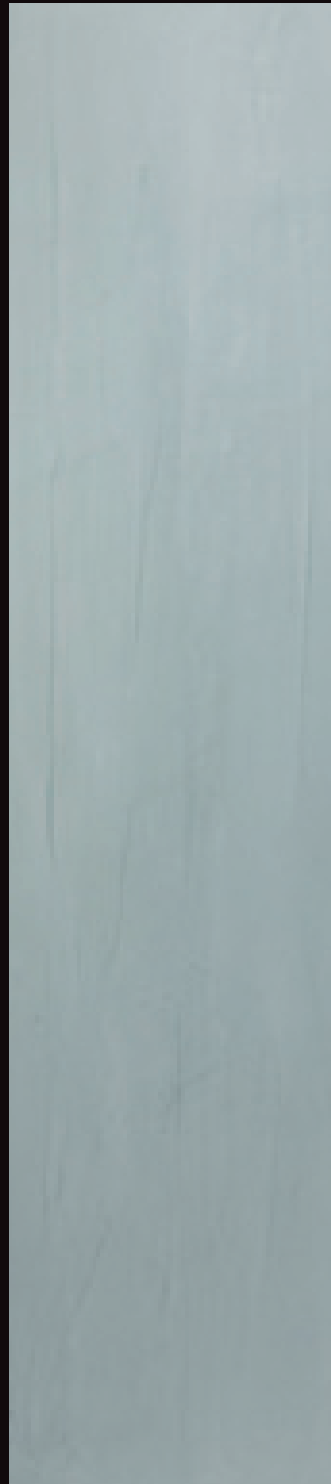
Colori fotografici ed indicativi - Photographie and suggested colours - Couleurs photographiques et indicatives - Fotografische und hinweisende Farben - Colores fotogràfics y sugerides - Cùluri fotogràfice și sugerate - Φωτοχρωματικά και προτεινόμενα χρώματα.



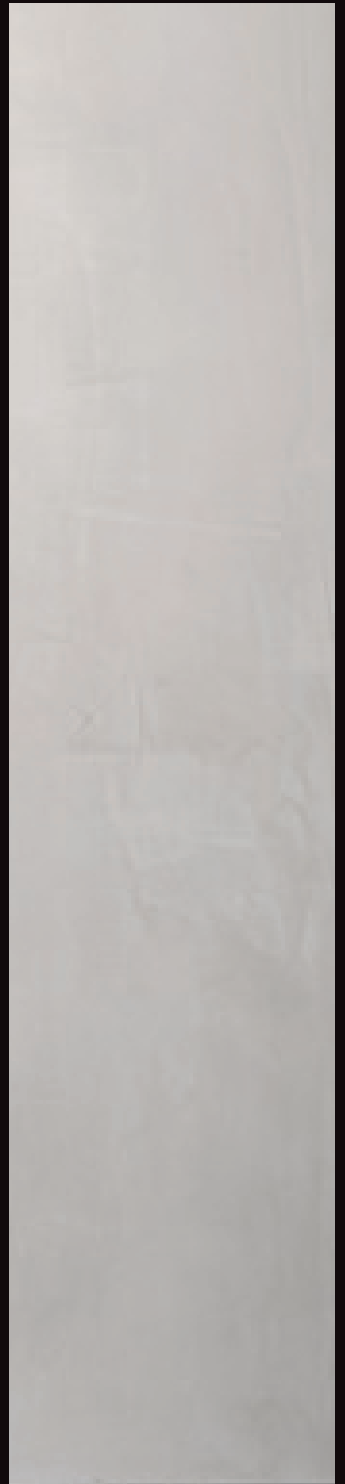
S4 SD



S4 SC



S3 GB



S4 KG

Spatula Stuhhi 1001
80% Spatula Stuhhi 1001 / 10% S4 KG / 10% S3 GF



V A R I O P I N T O
HIGH LIGHT

Spatula Stuhli 1001
80% Spatula Stuhli 1001 / 10% S4 KG / 10% S3 GF

Colori fotografici ed indicativi - Photographie and suggested colours - Couleurs photographiques et indicatives - Fotografische und hinweisende Farben - Colores fotograficos y sugeridos - Culoi fotografice și sugerate - Φωτοχρωματικά και προτεινόμενα χρώματα.



S3 NA
70% S3 NA / 15% Spatula Stuhli 1001 / 10% S3 GF



V A R I O P I N T O
HIGH LIGHT

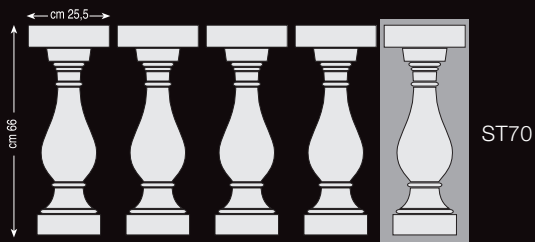
S4 NA

S3 NA
70% S3 NA / 15% Spatula Stuhli 1001 / 15% S3 GF

Colori fotografici ed indicativi - Photographie and suggested colours - Couleurs photographiques et indicatives - Fotografische und hinweisende Farben - Colores fotograficos y sugeridos - Culoari fotografice și sugerate - Φωτογραφικά και προτεινόμενα χρώματα.







S3 GC



Colori fotografici ed indicativi - Photographie and suggested colours - Couleurs photographiques et indicatives - Fotografische und hinweisende Farben - Colores fotograficos y sugerenciais - Culoiri fotografice și sugerate - Φωτοχρωματικά και προτεινόμενα χρώματα.



S P A T U L A

STUHHI

È un prodotto innovativo, ma che nasce dalla cultura Veneziana nel tradizionale settore degli stucchi lucidi e che è stato modificato ed adeguato alle attuali necessità di colorazioni e rapidità di posa. Spatula Stuhhi è un rivestimento assolutamente ecologico e non contiene solventi.

Spatula Stuhhi è Vivo, Naturale. Mai uguale neanche a se stesso.



An exceptional mineral stucco of great effect. Based on lime, it has shiny quality that varies with the method of application. Ecological natural material. **Spatula Stuhhi is alive, Natural. Each one is always unique.**

Stuc minéral excellent, de grand effet, à base de chaux, avec des propriétés de brillance suivant le travail effectué. Matériel écologique naturel. **Spatula Stuhhi est Vivant, Naturel. Jamais pareil, non plus à lui-même.**

Auserlesener, effektvoller Mineralspachtel auf Kalkbasis mit! Glanzvermögen je nach Verarbeitung. Baubiologisch natürlicher Werkstoff. **Spatula Stuhhi ist lebendig, Natürlich. Immer wieder anders.**

Excelente estuco mineral de gran efecto, a base de cal, con propiedades de brillo según el tipo de trabajado. Material ecológico natural. **Spatula Stuhhi es Vivo, Natural. Único en su género.**

Este un produs inovator care își are originile în cultura venețiană, în sectorul tradițional al stucurilor lucioase, dar care a fost modificat și adaptat cerințelor actuale sub aspectul culorilor și al rapidității aplicării. Spatula Stuhhi este un material de îmbrăcare 100% ecologic care nu conține solvenți. **Spatula Stuhhi este Viu, Natural. Niciodată la fel, nici măcar cu el însuși.**

Ένα εξαιρετικό, φυσικό Βενετσιάνικο stucco μοναδικού εφέ. Με βάση τον ασβέστη, παρουσιάζει τέτοιες λάμπεις που διαφοροποιούνται αναλόγως της εφαρμογής. Είναι ένα απόλυτα Οικολογικό stucco και δεν εμπεριέχει διαλύτες. **To Spatula Stuhhi είναι Ζωντανό, Φυσικό. Πλήρως καινοτόμο και ξεπερνά τον εαυτό του.**



	ZA	ZB	ZC	ZD	ZE	ZF	ZG	
I Colori del Sole								S1
								S2
								S3
								S4

	SC	SB	SD	SE	SA	SV	SG	
I Colori di Londra								S1
								S2
								S3
								S4

I Colori di New York

	NA	NB	NS	NL	NR	NO	NY	
								S1
								S2
								S3
								S4

I Colori dell'Anima

	AR	AA	AL	AM	AF	AV	AZ	
								S1
								S2
								S3
								S4

I Colori della Pietra

GG	GF	GE	GD	GC	GB	GA	
							S1
							S2
							S3
							S4

I Colori di Portofino

KB	KA	KF	KC	KD	KG	KE	
							S1
							S2
							S3
							S4



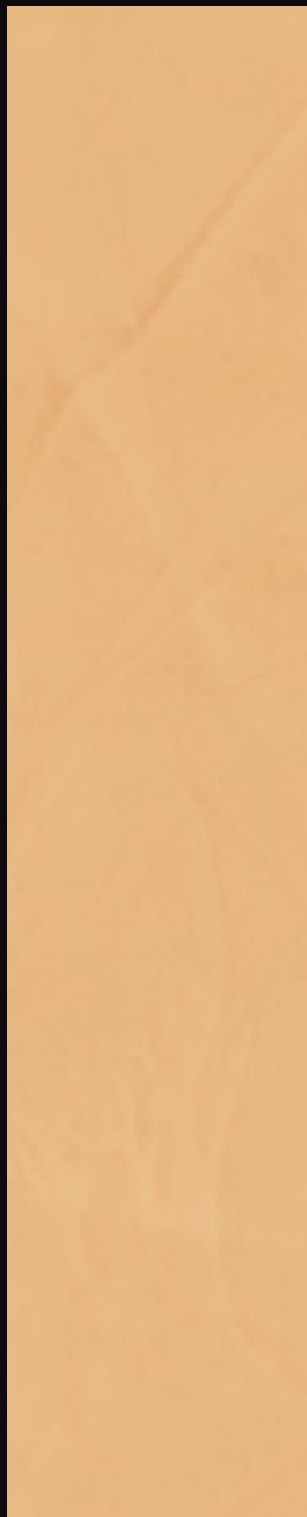
I C O L O R I D E L L A
P I E T R A

GG	GF	GE	GD	GC	GB	GA	
							S1
							S2
							S3
							S4

Colori fotografici ed indicativi - Photographic and suggested colours - Couleurs photographiques et indicatives - Fotografische und hinweisende Farben - Colores fotográficos y sugerencias - Colori fotografice și sugerate - Φωτογραφικά και προτεινόμενα χρώματα.



Borgogna



S1 GG



S2 GG



S3 GG



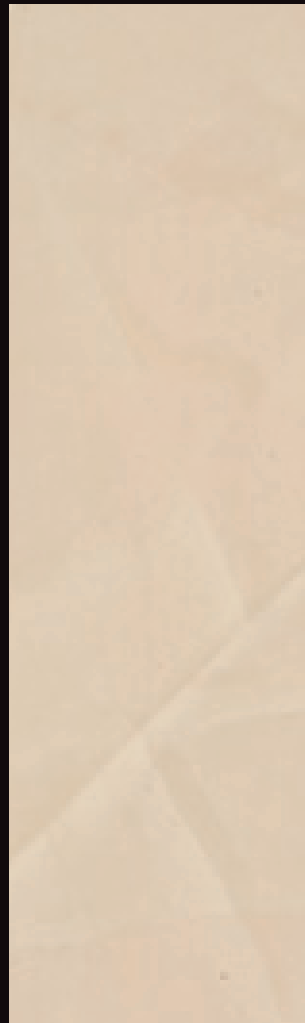
S4 GG



S1 GF



S2 GF



S3 GF



S4 GF

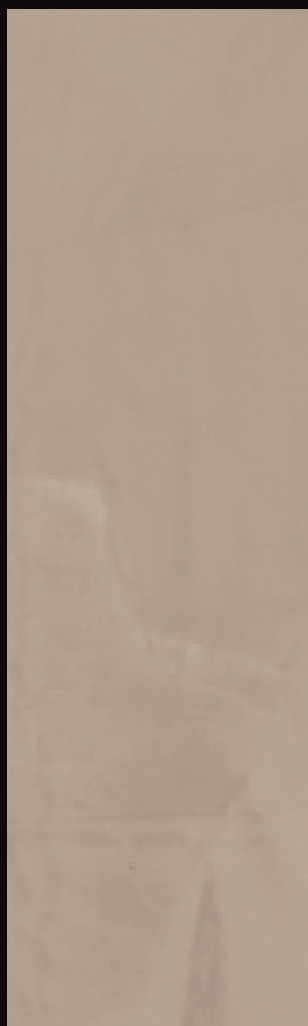
Bronzo Amani



I Colori della Pietra



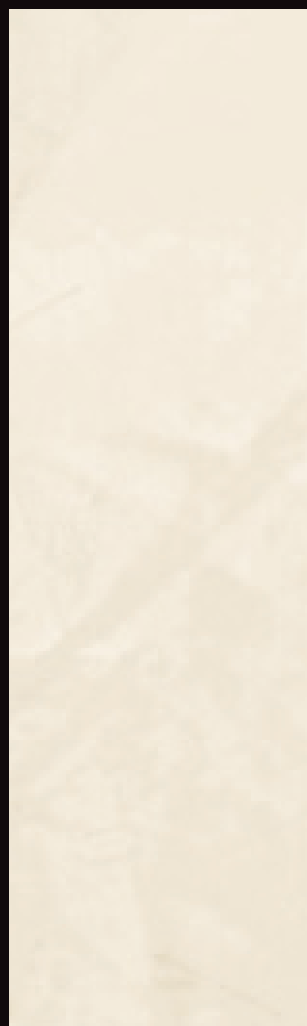
S1 GE



S2 GE



S3 GE



S4 GE

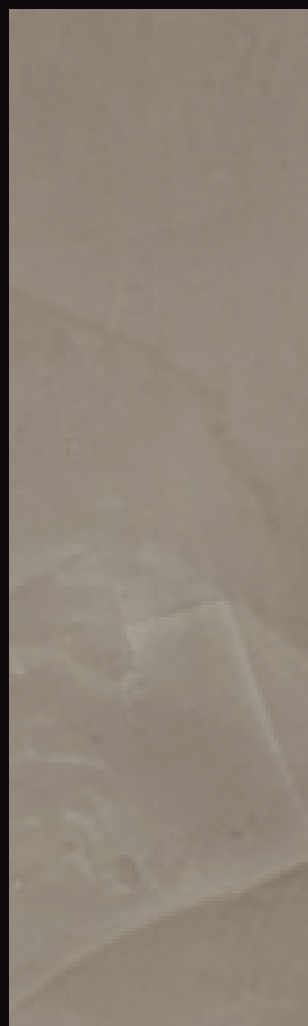
Pietra Lavica



S3 GD



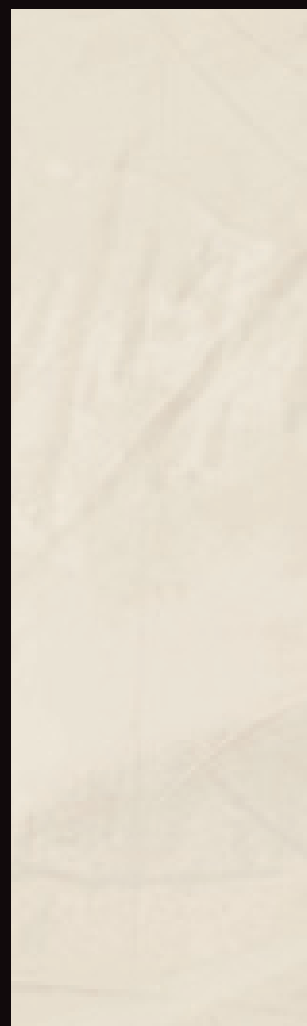
S1 GD



S2 GD



S3 GD



S4 GD

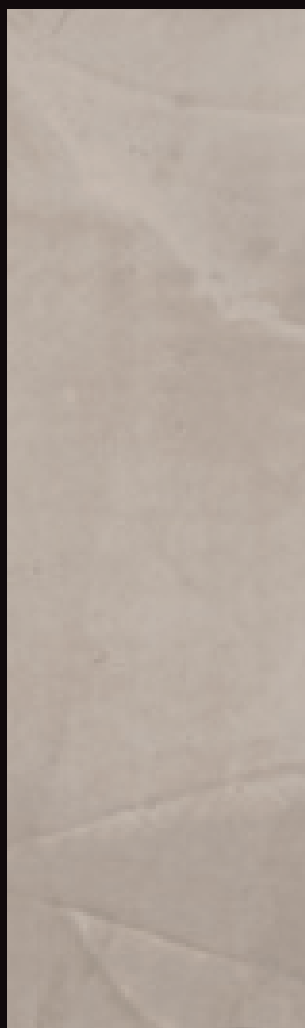
Quarzo Fumè



S1 GC



S2 GC



S3 GC

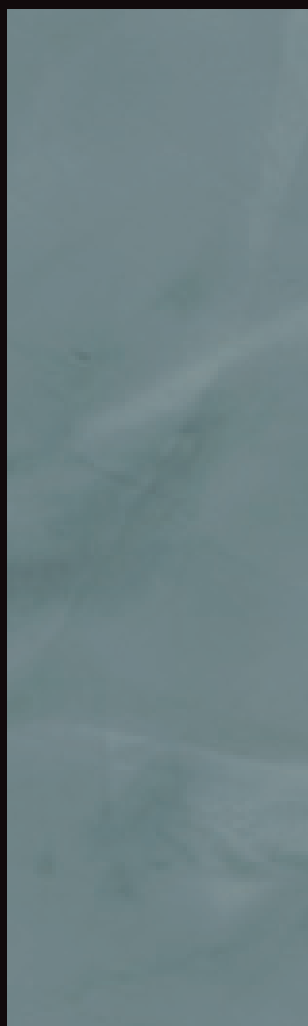


S4 GC

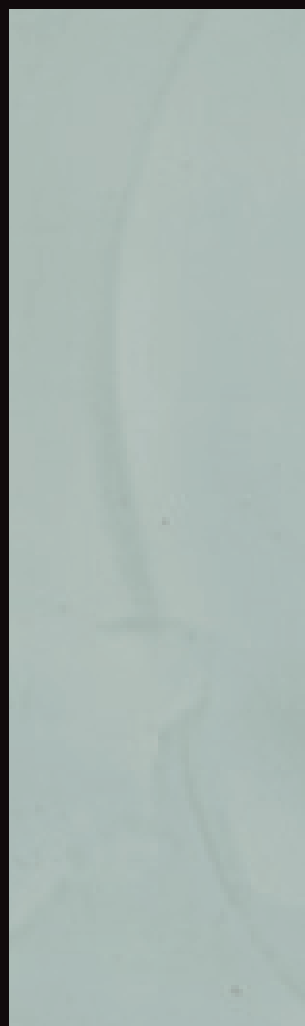
Verde Diaspro



S1 GB



S2 GB



S3 GB

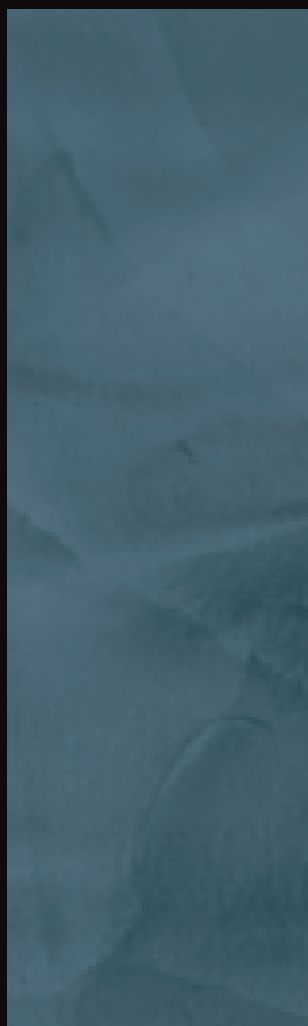


S4 GB

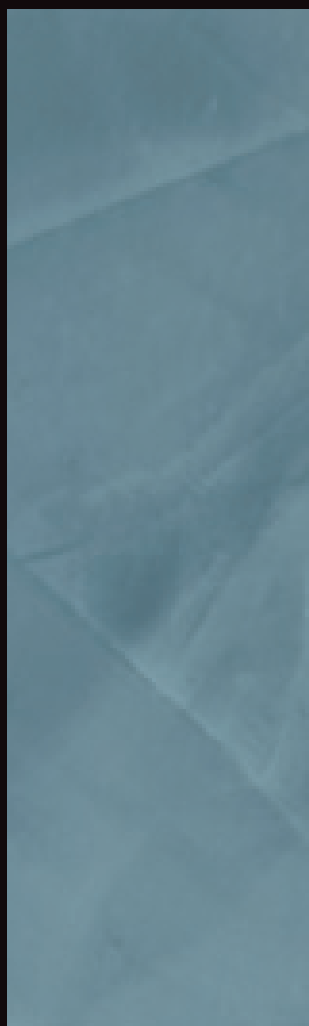
Agate Blu



S3 GA



S1 GA



S2 GA



S3 GA



S4 GA



I C O L O R I D I
 PORTOFINO

KB	KA	KF	KC	KD	KG	KE	
							S1
							S2
							S3
							S4

Colori fotografici ed indicativi - Photographic and suggested colours - Couleurs photographiques et indicatives - Fotografische und hinweisende Farben - Colores fotograficos y sugerencias - Colori fotografice și sugerate - Φωτογραφικά και προτεινόμενα χρώματα.



Arancio



S1 KB



S2 KB

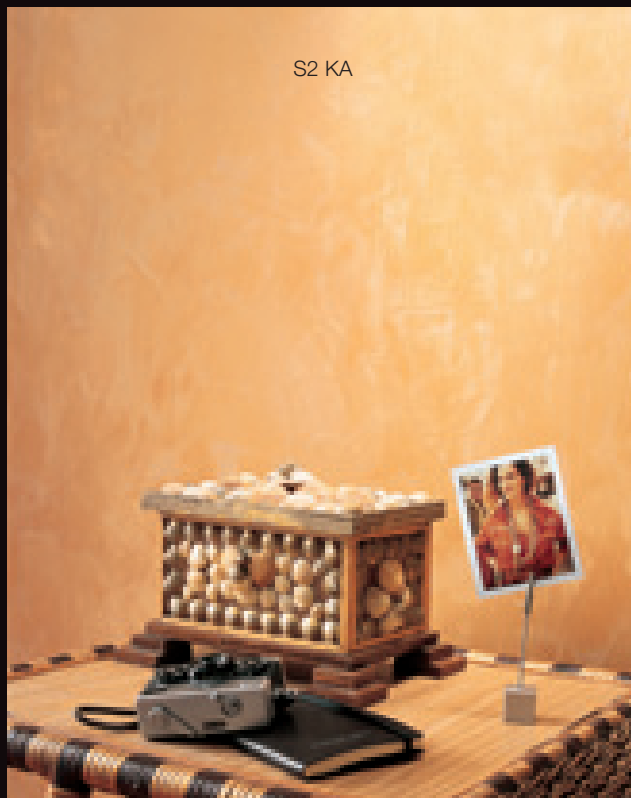


S3 KB



S4 KB

S2 KA



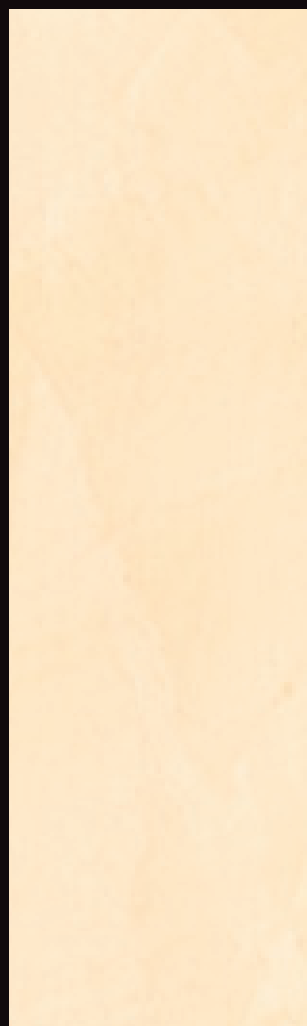
S1 KA



S2 KA



S3 KA



S4 KA

Terra



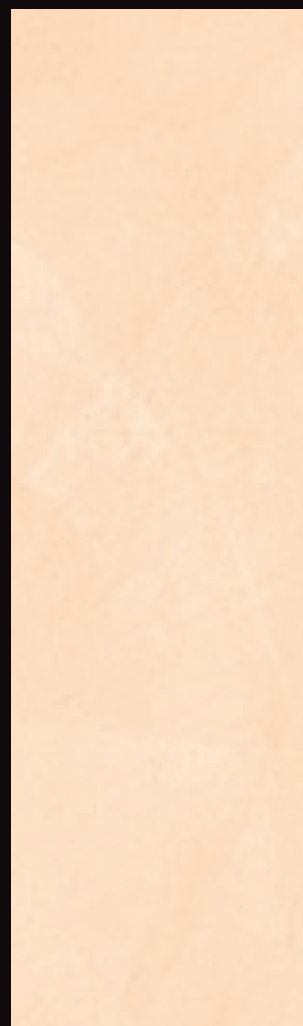
S1 KF



S2 KF



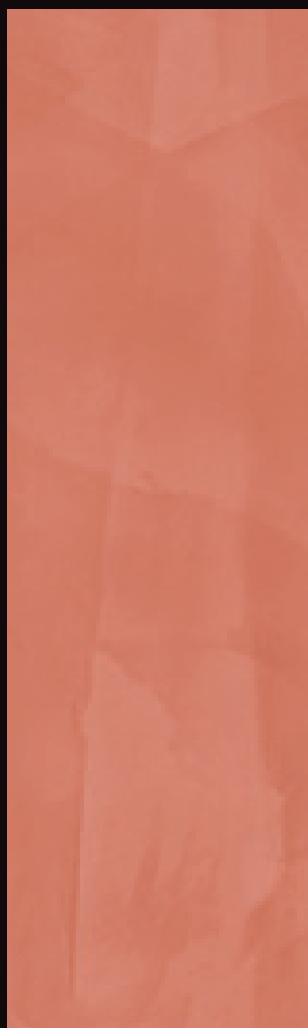
S3 KF



S4 KF

I Colori di Portofino

S1 KC



S1 KC



S2 KC



S3 KC



S4 KC

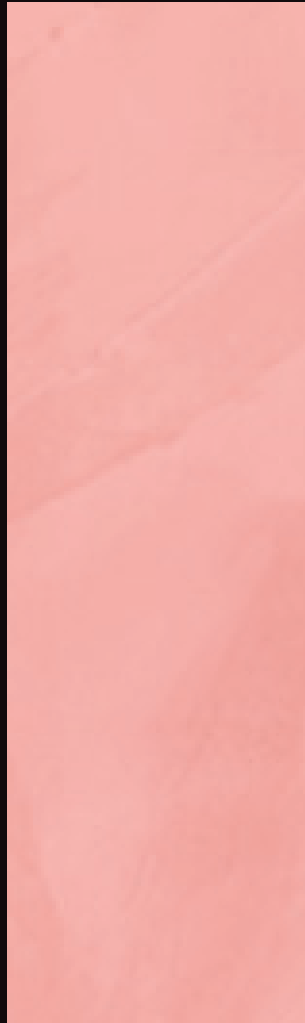
Rosso



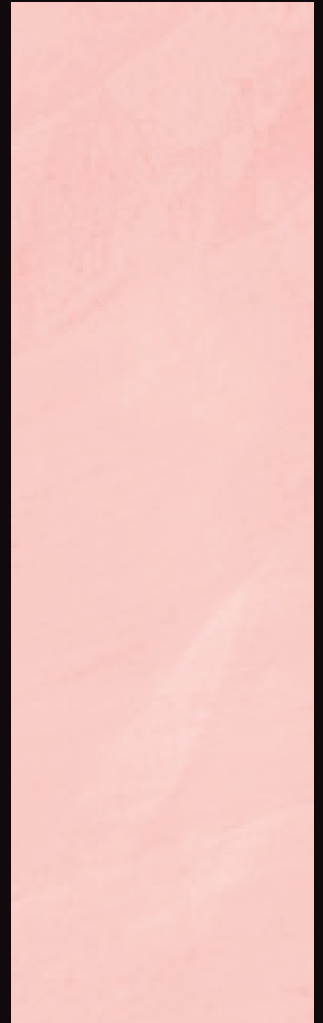
S1 KD



S2 KD



S3 KD



S4 KD

I Colori di Portofino

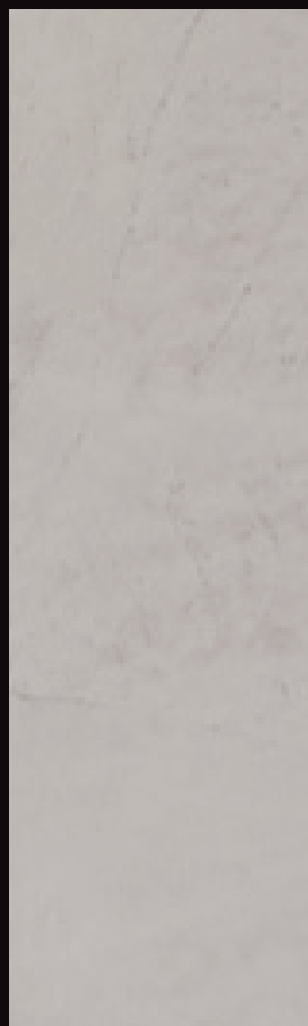
Ardesia



S1 KG



S2 KG



S3 KG

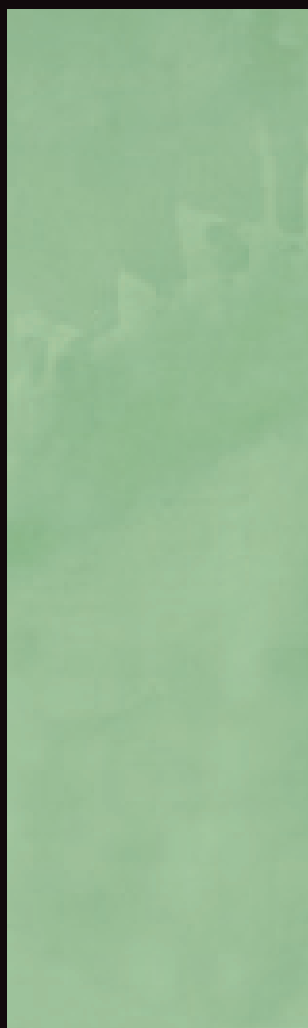


S4 KG

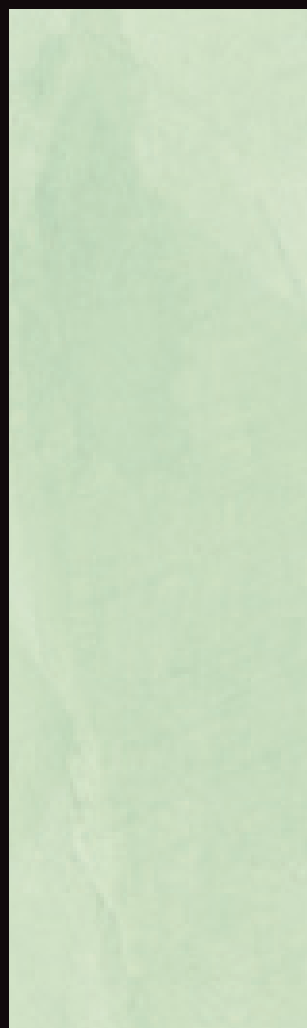
Oliva



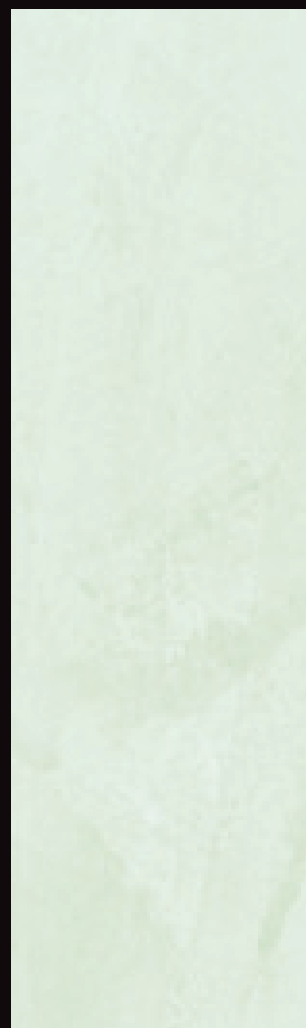
S1 KE



S2 KE



S3 KE



S4 KE

I Colori di Portofino



I C O L O R I D E L
S O L E

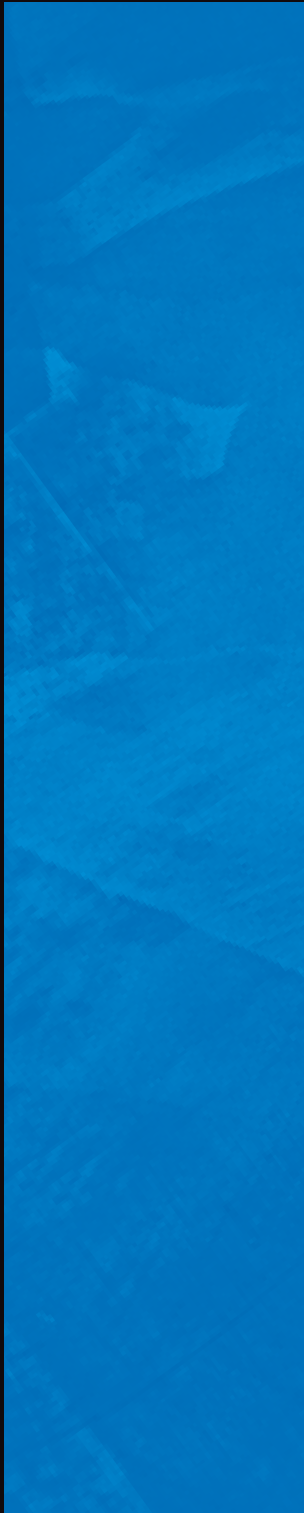
I Colori del Sole

ZA	ZB	ZC	ZD	ZE	ZF	ZG	
							S1
							S2
							S3
							S4

Colori fotografici ed indicativi - Photographic and suggested colours - Couleurs photographiques et indicatives - Fotografische und hinweisende Farben - Colores fotográficos y sugerencias - Colori fotografice și sugerate - Φωτογραφικά και προτεινόμενα χρώματα.



Il Cielo



S1 ZA



S2 ZA



S3 ZA



S4 ZA

I Colori del Sole



S2 ZB

S3 ZB



S1 ZB



S2 ZB



S3 ZB



S4 ZB

Il Sole



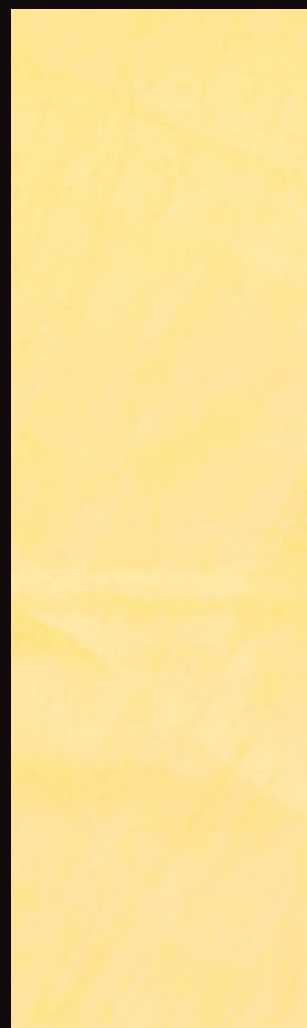
S1 ZC



S2 ZC



S3 ZC



S4 ZC

S1 ZD



S1 ZD



S2 ZD



S3 ZD



S4 ZD

La Sabbia



S1 ZE



S2 ZE



S3 ZE



S4 ZE

La Pietra al Sole



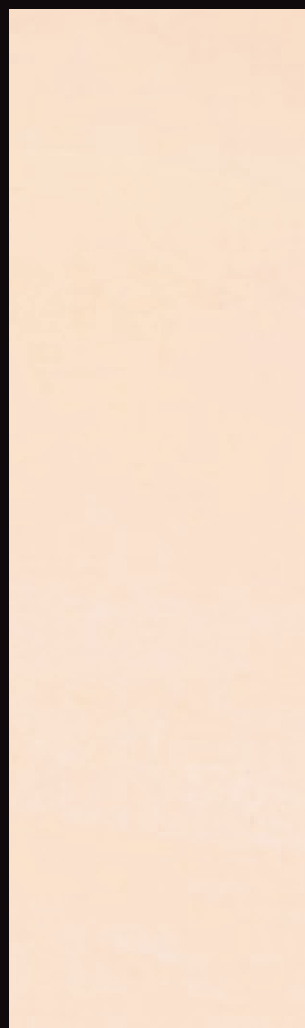
S1 ZF



S2 ZF



S3 ZF

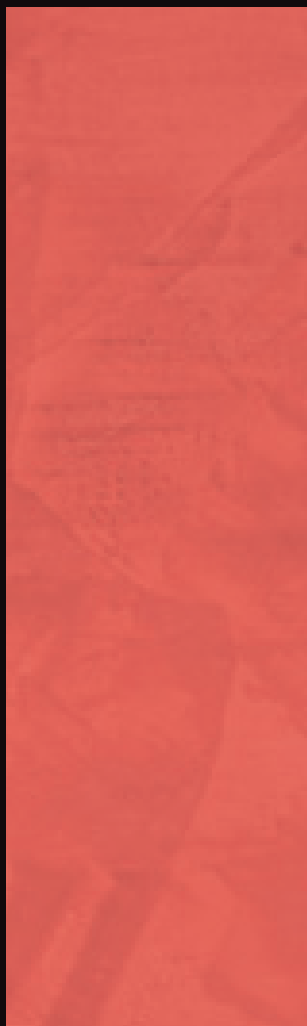


S4 ZF

L'Imbrunire



S1 ZG



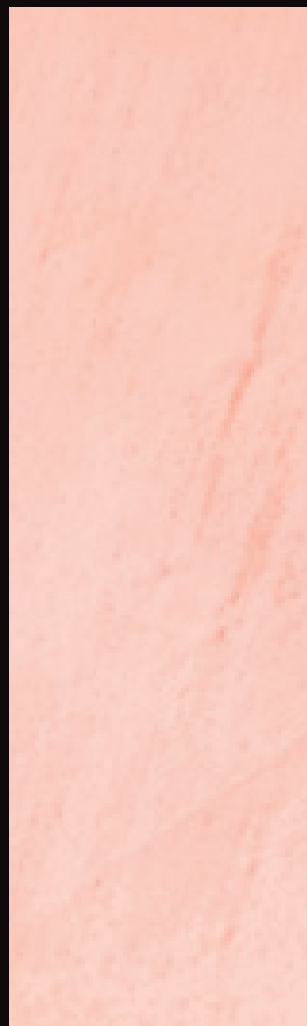
S1 ZG



S2 ZG



S3 ZG



S4 ZG

I Colori del Sole

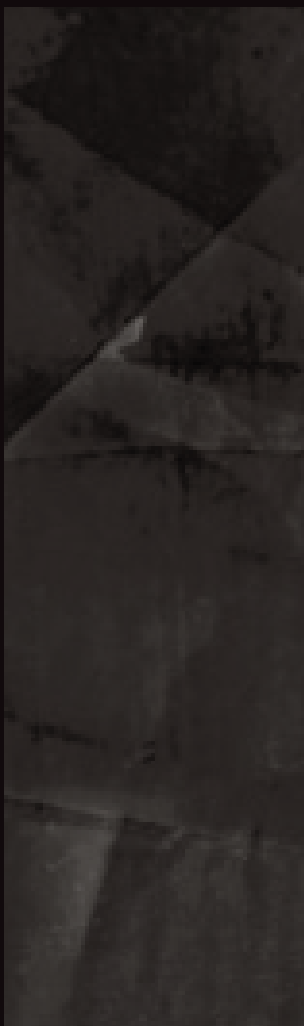


I C O L O R I D I
 NEW YORK

NA	NB	NS	NL	NR	NO	NY	
							S1
							S2
							S3
							S4

Colori fotografici ed indicativi - Photographic and suggested colours - Couleurs photographiques et indicatives - Fotografische und hinweisende Farben - Colores fotográficos y sugerencias - Colori fotografice și sugerate - Φωτογραφικά και προτεινόμενα χρώματα.

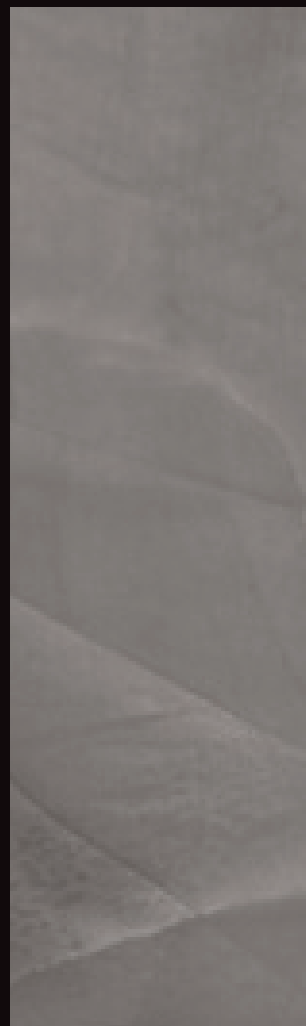
I Colori di New York



S1 NA



S2 NA



S3 NA



S4 NA

Brown



S3 NB



S1 NB



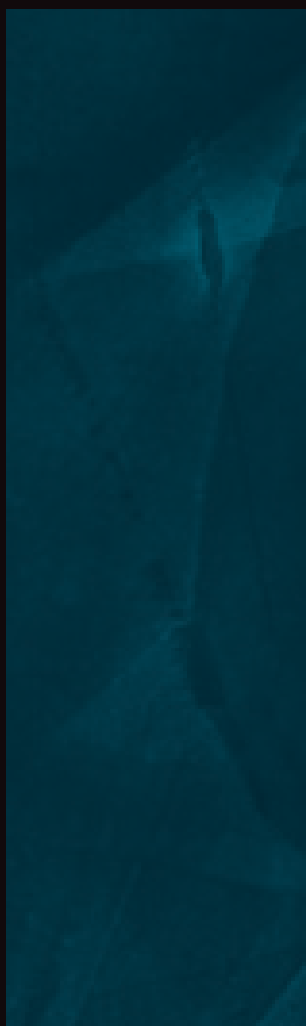
S2 NB



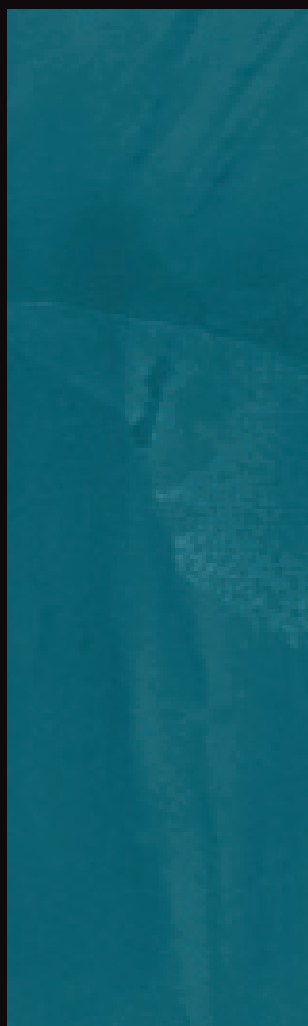
S3 NB



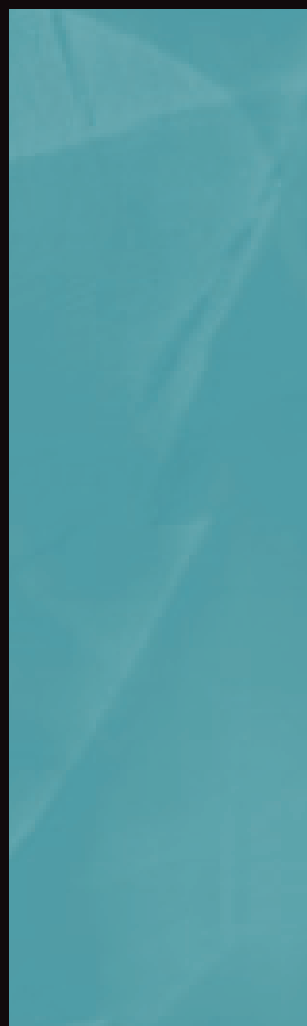
S4 NB



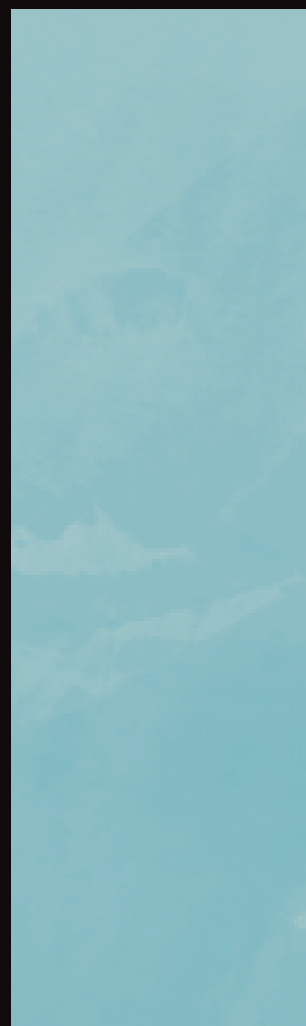
S1 NS



S2 NS

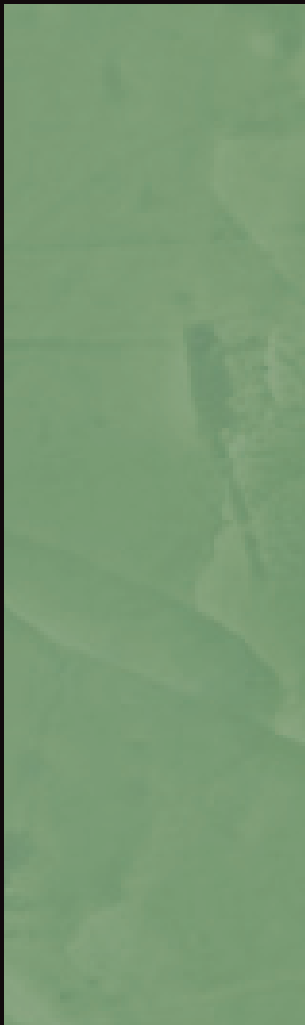


S3 NS

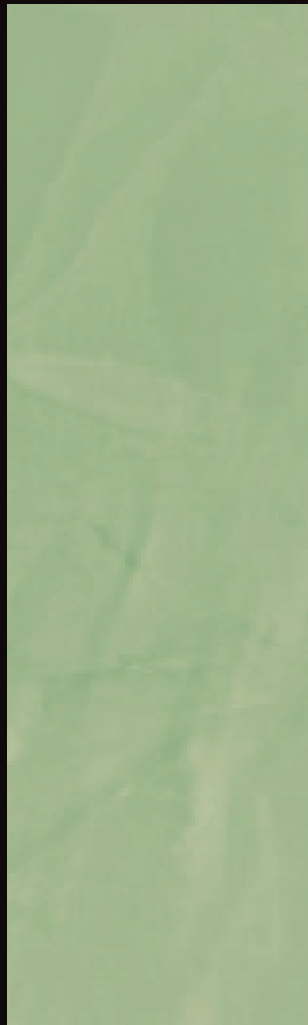


S4 NS

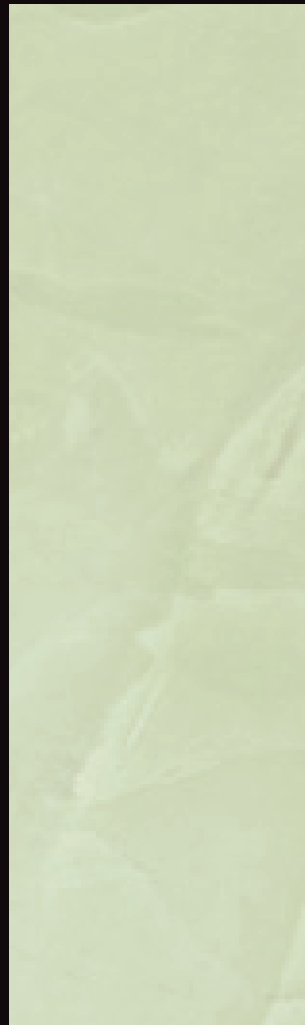
Leaves



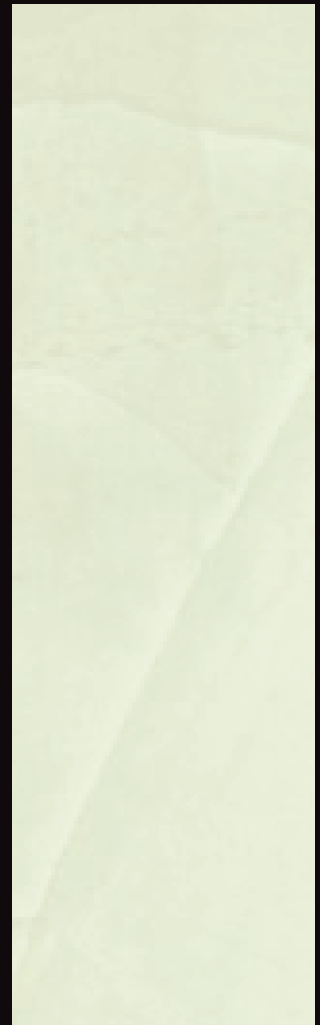
S1 NL



S2 NL

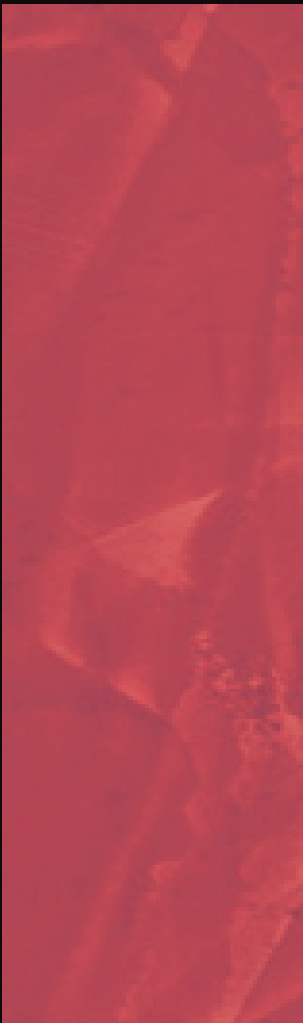


S3 NL

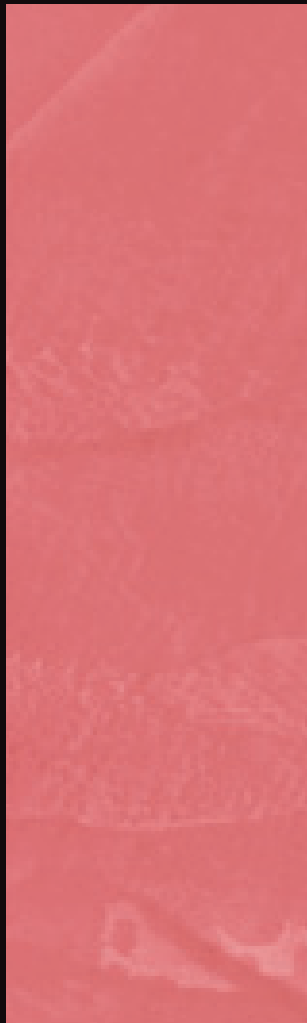


S4 NL

Red



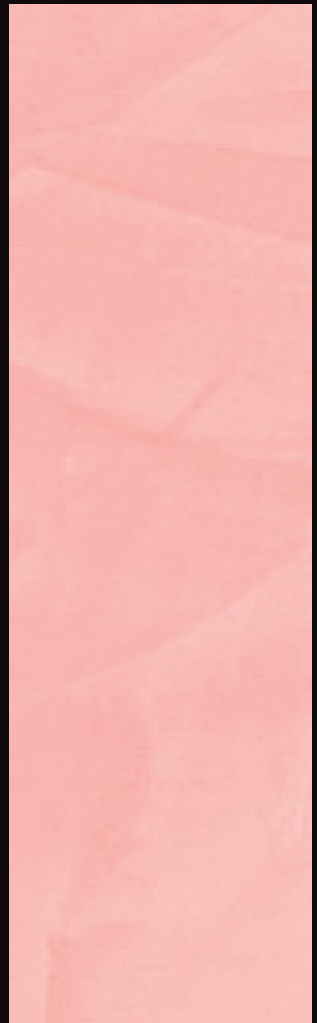
S1 NR



S2 NR



S3 NR



S4 NR

Autumn Orange



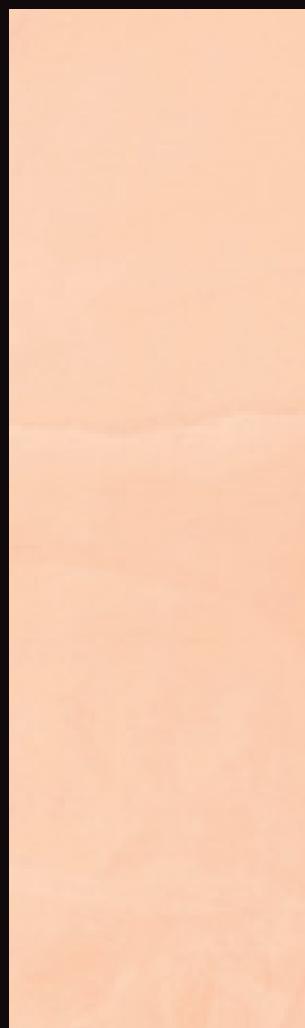
S1 NO



S2 NO



S3 NO



S4 NO

Autumn Yellow



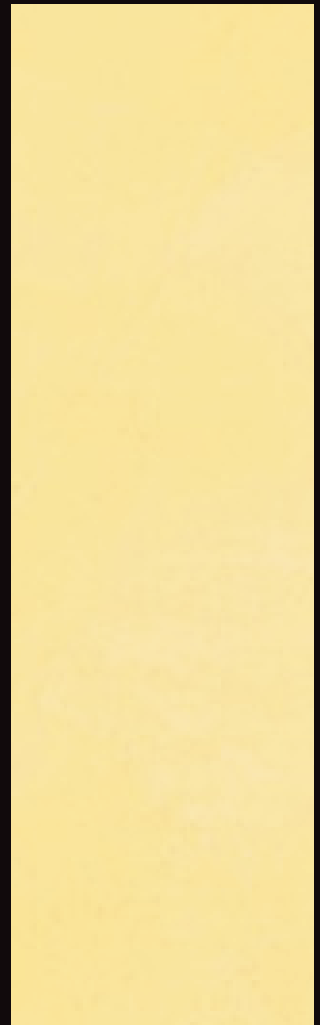
S1 NY



S2 NY



S3 NY

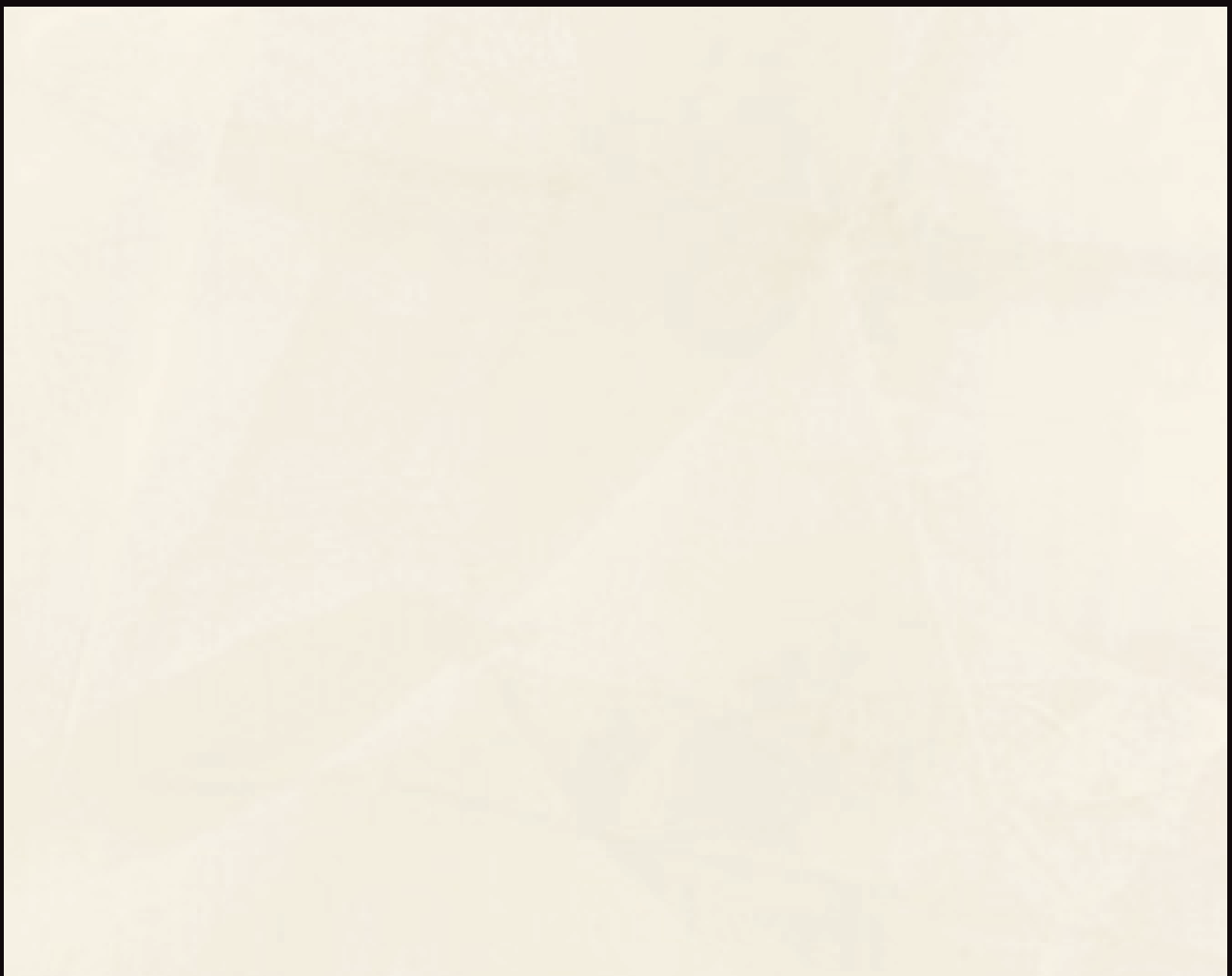


S4 NY

White



White



White



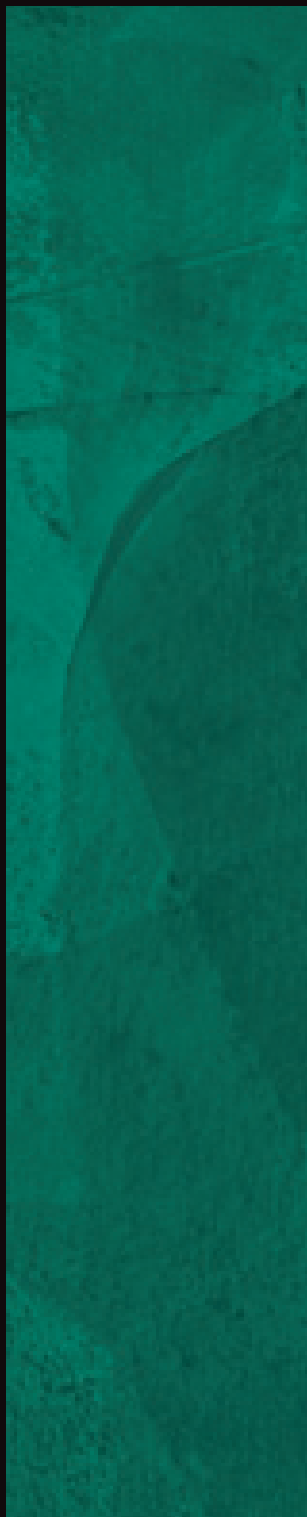
I C O L O R I D I
 L O N D R A

	SC	SB	SD	SE	SA	SV	SG	
								S1
								S2
								S3
								S4

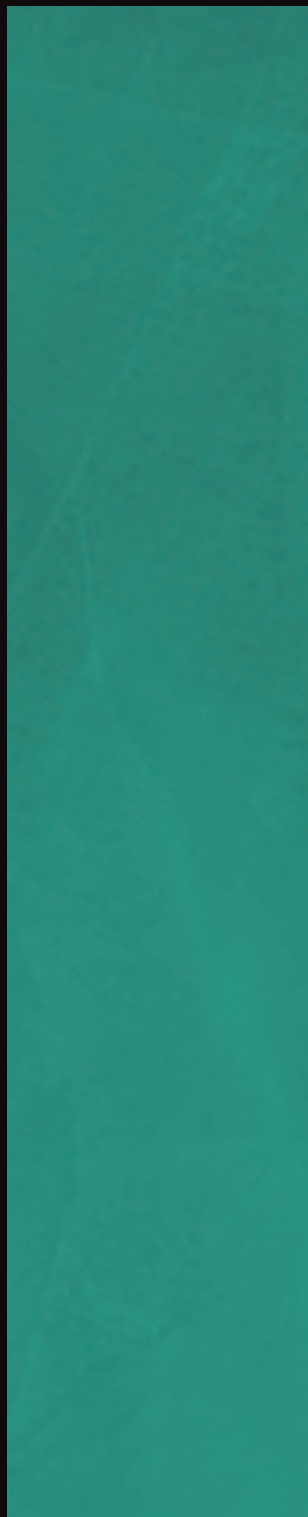
Colori fotografici ed indicativi - Photographic and suggested colours - Couleurs photographiques et indicatives - Fotografische und hinweisende Farben - Colores fotograficos y sugerencias - Colori fotografice și sugerate - Φωτογραφικά και προτεινόμενα χρώματα.



English Green



S1 SD



S2 SD



S3 SD



S4 SD

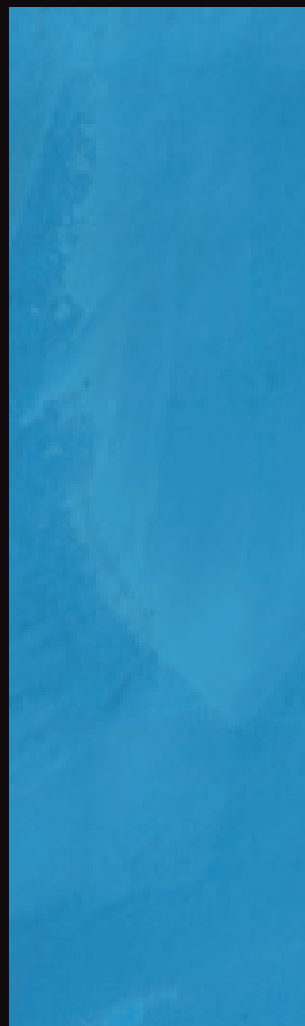
London Blue



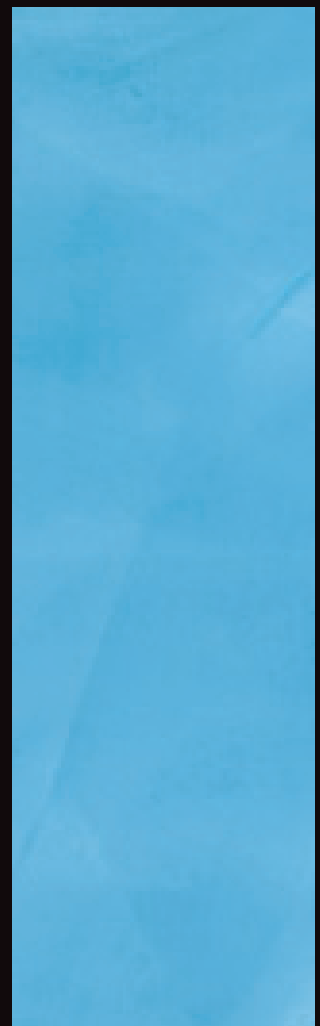
S1 SB



S2 SB



S3 SB



S4 SB



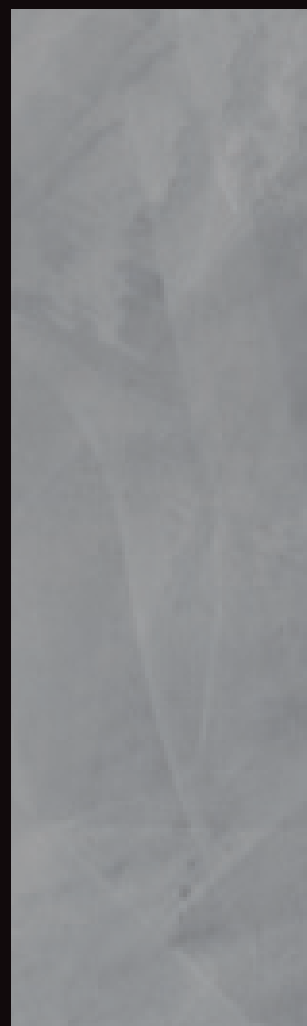
S1 SC



S2 SC

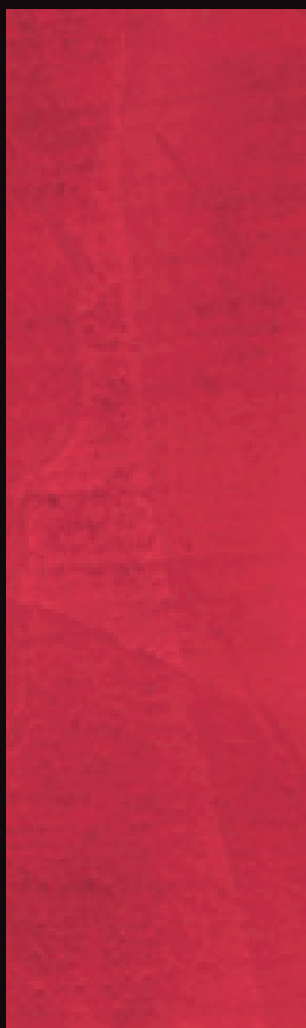
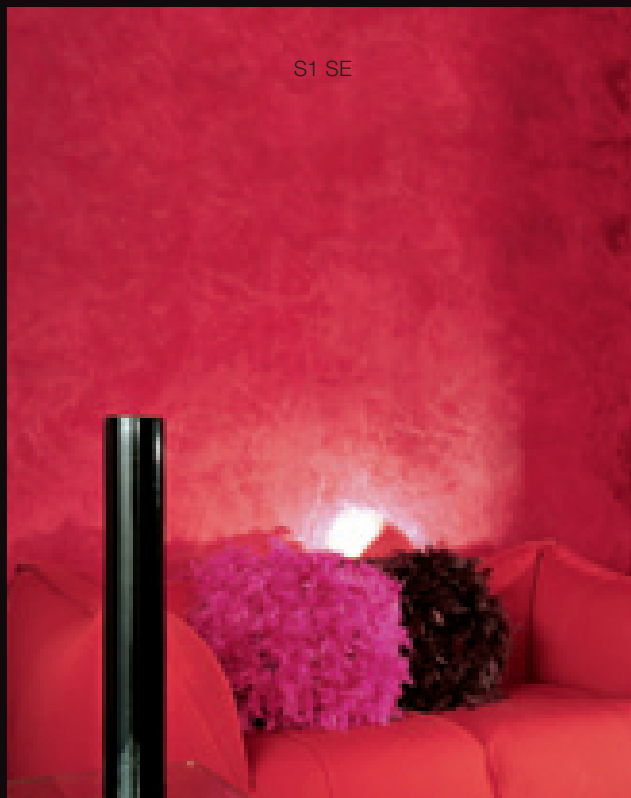


S3 SC

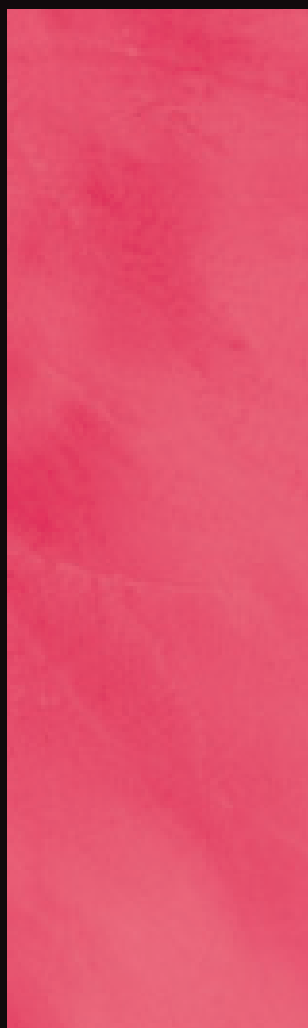


S4 SC

London Red



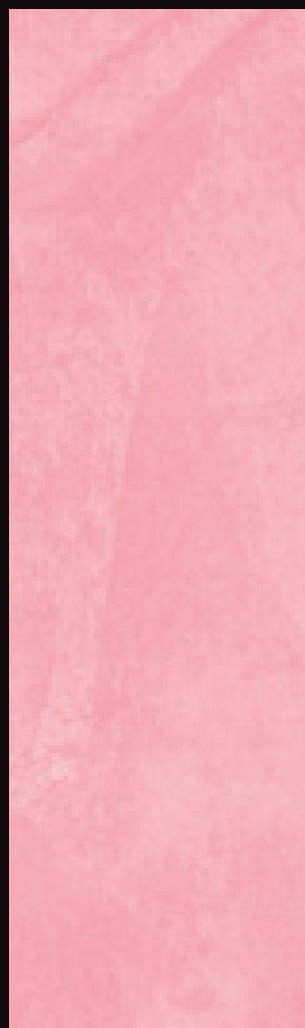
S1 SE



S2 SE



S3 SE



S4 SE

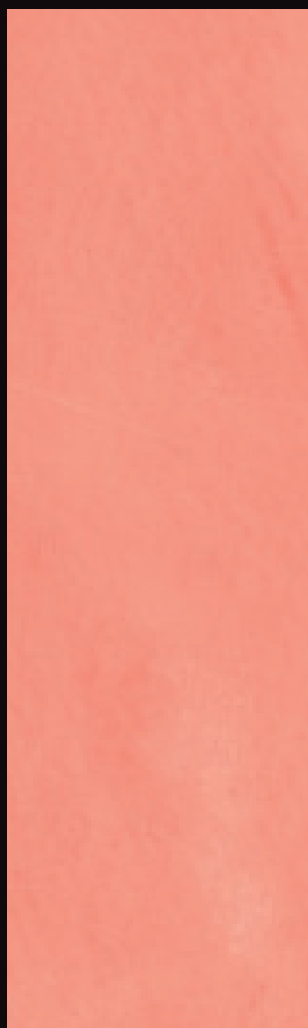
Terra di Kenya



S3 SA



S1 SA



S2 SA



S3 SA



S4 SA

I Colori di Londra

Violet



S1 SV



S2 SV



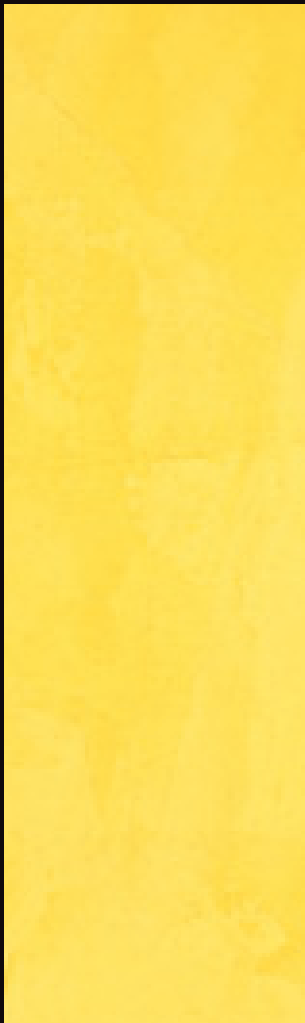
S3 SV



S4 SV

Yellow

S1 SG



S1 SG



S2 SG



S3 SG



S4 SG



I C O L O R I D E L L '
 A N I M A

	AR	AA	AL	AM	AF	AV	AZ	
								S1
								S2
								S3
								S4

Colori fotografici ed indicativi - Photographic and suggested colours - Couleurs photographiques et indicatives - Fotografische und hinweisende Farben - Colores fotográficos y sugerencias - Colori fotografice și sugerate - Φωτογραφικά και προτεινόμενα χρώματα.



Uscire allo Scoperto



S1 AR



S2 AR

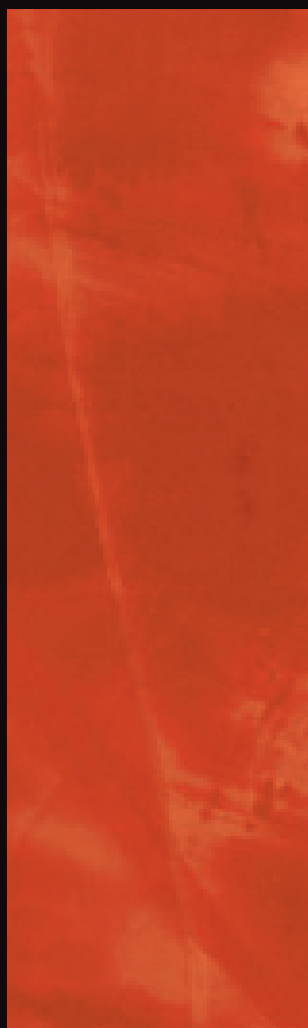


S3 AR



S4 AR

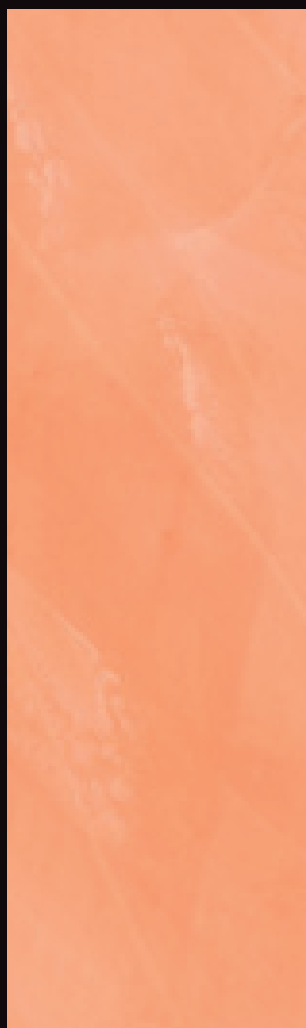
Contemplazione Attiva



S1 AA



S2 AA

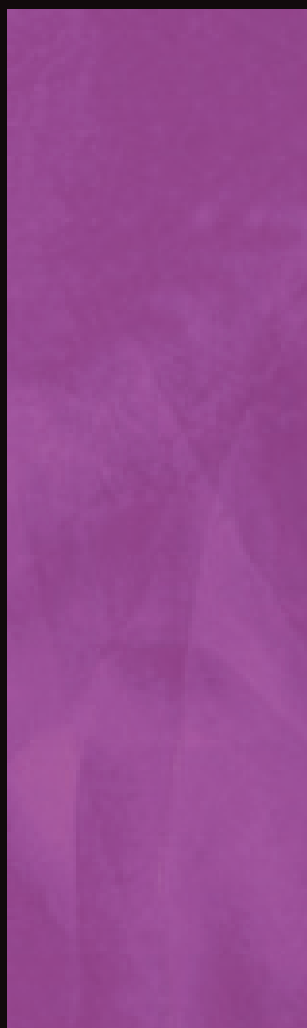
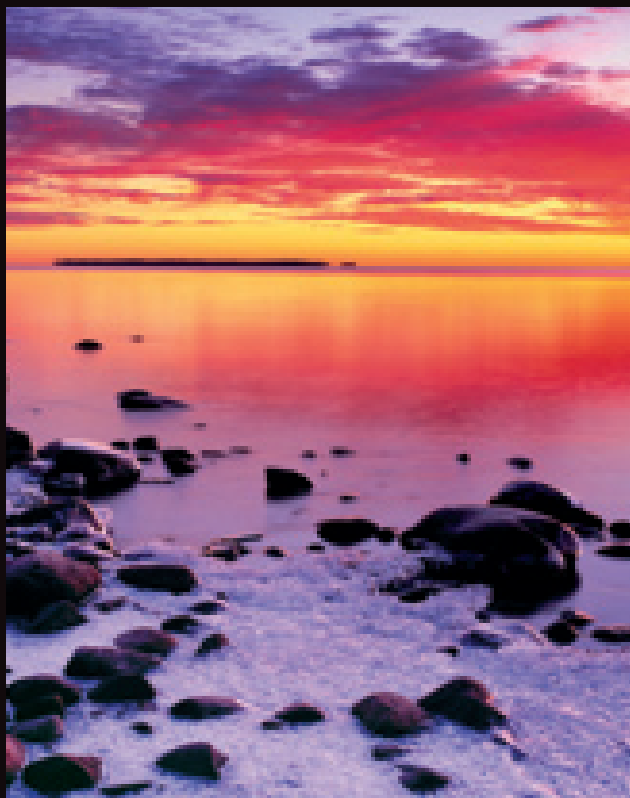


S3 AA



S4 AA

La Pace dei Sensi



S1 AL



S2 AL



S3 AL

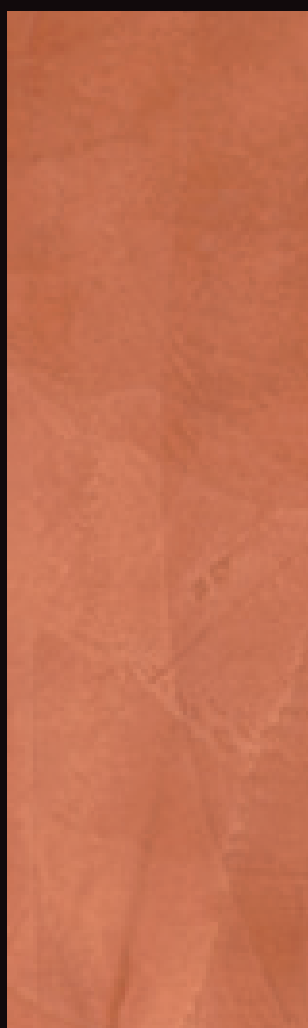


S4 AL

Profumo di Libertà



S1 AM



S2 AM



S3 AM



S4 AM

Dolce Accoglienza



S1 AF



S2 AF

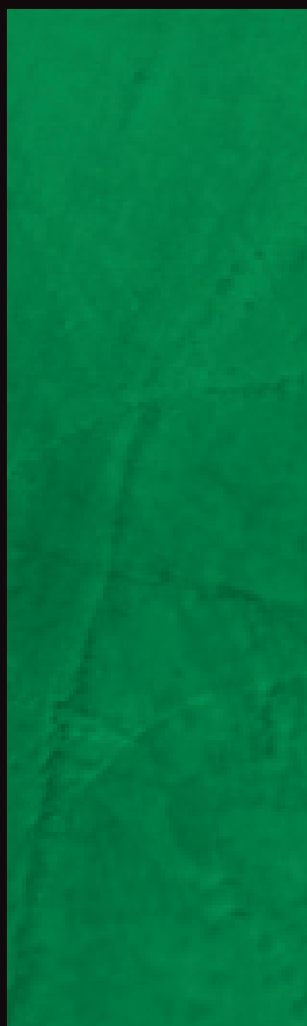


S3 AF



S4 AF

Il Rifugio del Guerriero



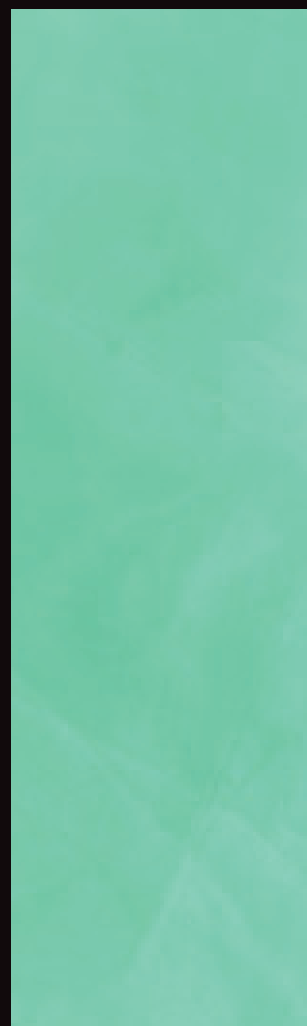
S1 AV



S2 AV

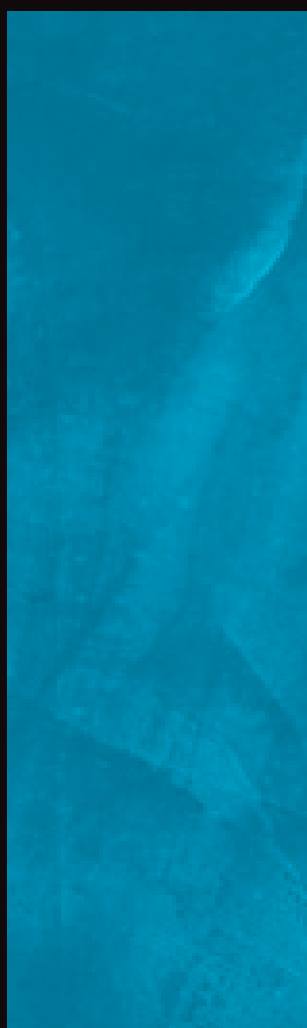
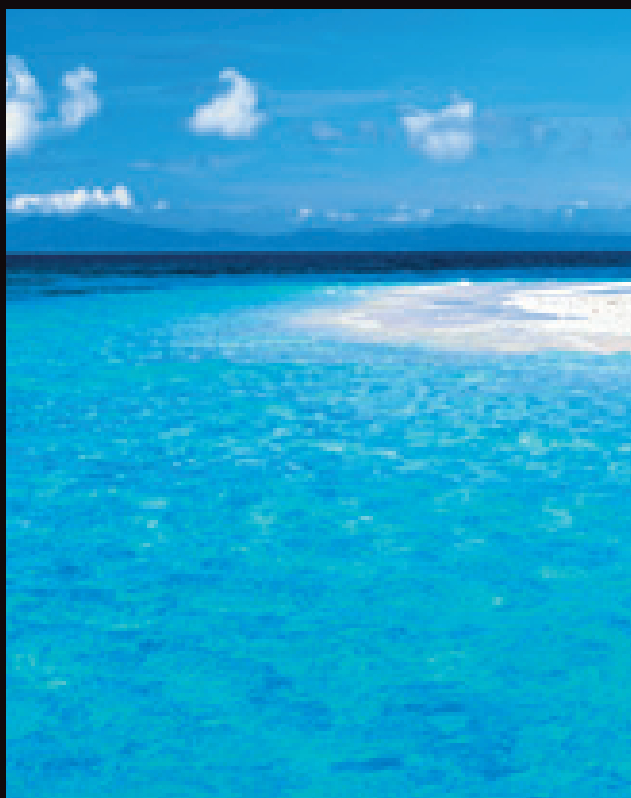


S3 AV



S4 AV

A Perdita d'Occhio



S1 AZ



S2 AZ



S3 AZ



S4 AZ



È uno stucco lucido, naturale, a lunga stagionatura, di grande qualità; polveri di marmo ed additivi conferiscono al prodotto alta adesione al supporto ed ottima scorrevolezza al momento dell'applicazione, raggiungendo la finitura rapidamente. SPATULA STUH-HI è un rivestimento assolutamente ecologico e non contiene solventi. Completamente all'acqua quindi per sua natura non infiammabile. Consumo ideale nelle 3 Mani: 1 kg per mq.

LAVABILITÀ: Il prodotto nella sua versione normale non è lavabile. Anzi, la sua migliore caratteristica è la traspirabilità. In aree ove sia necessaria la lavabilità consigliamo la protezione con Cera del Vecchio.

RIVERNICIATURA: Dopo molti anni si potrà decidere di sostituire SPATULA STUH-HI o con SPATULA STUH-HI stesso o con altri prodotti. È molto semplice, ecco cosa fare: Carteggiare adeguatamente fino ad eliminare la lucidità superficiale. Applicare direttamente ancora SPATULA STUH-HI ed idropittura o altro senza alcun problema.

TEMPO DI ASCIUGATURA: Trattabile dopo ca. 12-14 ore a +20 °C (273 K) e con un'umidità relativa del 65%. Asciugatura totale dopo 28 giorni.

CONSERVAZIONE: In luogo secco, fresco, al riparo dal gelo e dall'umidità.

NORME DI SICUREZZA: Proteggere gli occhi e la pelle da spruzzi del prodotto.

This is a glossy, natural, high quality stucco that has been seasoned for a lengthy period; marble powders and additives make the product highly adhesive and it flows well when applied, reaching the finished stage very quickly. SPATULA STUH-HI is a totally ecological covering and contains no solvents. It is completely water-based and is therefore non-flammable. Ideal Coverage using 3 Coats: 1 kg m².

WASHABILITY: The product is not washable in its normal version. On the contrary, its best feature is that it can breathe. We recommend protection with Cera del Vecchio in areas where washability is necessary.

REPAINTING: After many years you may decide to replace SPATULA STUH-HI either with SPATULA STUH-HI itself or with other products. It's very simple, just: - Rub down with sand paper until you have removed the glossy surface. - Apply SPATULA STUH-HI again, a water-based paint or any other product, directly without any problem.

DRYING TIME: Treatable after about 12-14 hours at +20 °C (273 K) and with a relative humidity of 65%. Totally dry after 28 days.

CONSERVATION: In a dry, cool place, away from the frost and humidity.

SAFETY REGULATIONS: Protect the eyes and skin from splashing with the product.

C'est un mastic brillant, naturel, à séchage long, de grande qualité; des poudres de marbre et des additifs donnent à ce produit une excellente adhésion au support, et une fluidité optimale au moment de l'application, tout en permettant de parfaire la finition rapidement.

SPATULA STUH-HI est un revêtement absolument écologique; il ne contient aucun solvant. Il est fait complètement à l'eau, et est donc de par sa nature non inflammable. Consommation idéale en 3 couches : 1 kg par m².

LAVABILITÉ: Dans sa version normale, ce produit n'est pas lavable. Au contraire, sa qualité principale est la transpirabilité. Sur les surfaces où la lavabilité est nécessaire, nous vous conseillons de protéger avec la Cera del Vecchio.

REPEINTURE: Après beaucoup d'années, vous pourrez décider de remplacer SPATULA STUH-HI par un autre SPATULA STUH-HI ou par d'autres produits. C'est très simple, voilà comment faire: poncer de façon adéquate pour éliminer le brillant superficiel, appliquer directement à nouveau SPATULA STUH-HI, ou bien des peintures à l'eau ou un autre produit, sans aucun problème.

TEMPS DE SÈCHAGE: La surface peut être traitée après environ 12-14 heures à +20°C (273 K) et avec une humidité relative de 65%. Séchage total en 28 jours.

CONSERVATION: Dans un endroit sec, frais, à l'abri du gel et de l'humidité.

NORMES DE SÉCURITÉ: Protéger les yeux et la peau contre toute éclaboussure du produit.

Es handelt sich um eine glänzende, natürliche Spachtelmasse mit einer langen Ablagerung und einer großen Qualität; Marmorstaub und Zusatzstoffe verleihen dem Produkt eine hohe Haftung an der Unterlage und eine hervorragende Fleckkraft, im Moment, in dem dieses aufgetragen wird, und ermöglichen eine schnelle Feinverarbeitung. SPATULA STUH-HI ist ein absolut umweltfreundlicher Überzug und enthält keine Lösungsmittel. Vollkommen auf Wasserbasis und daher seiner Natur wegen nicht entflammbar. Idealer Verbrauch bei 3 Anstrichen: 1 Kg pro Qm.

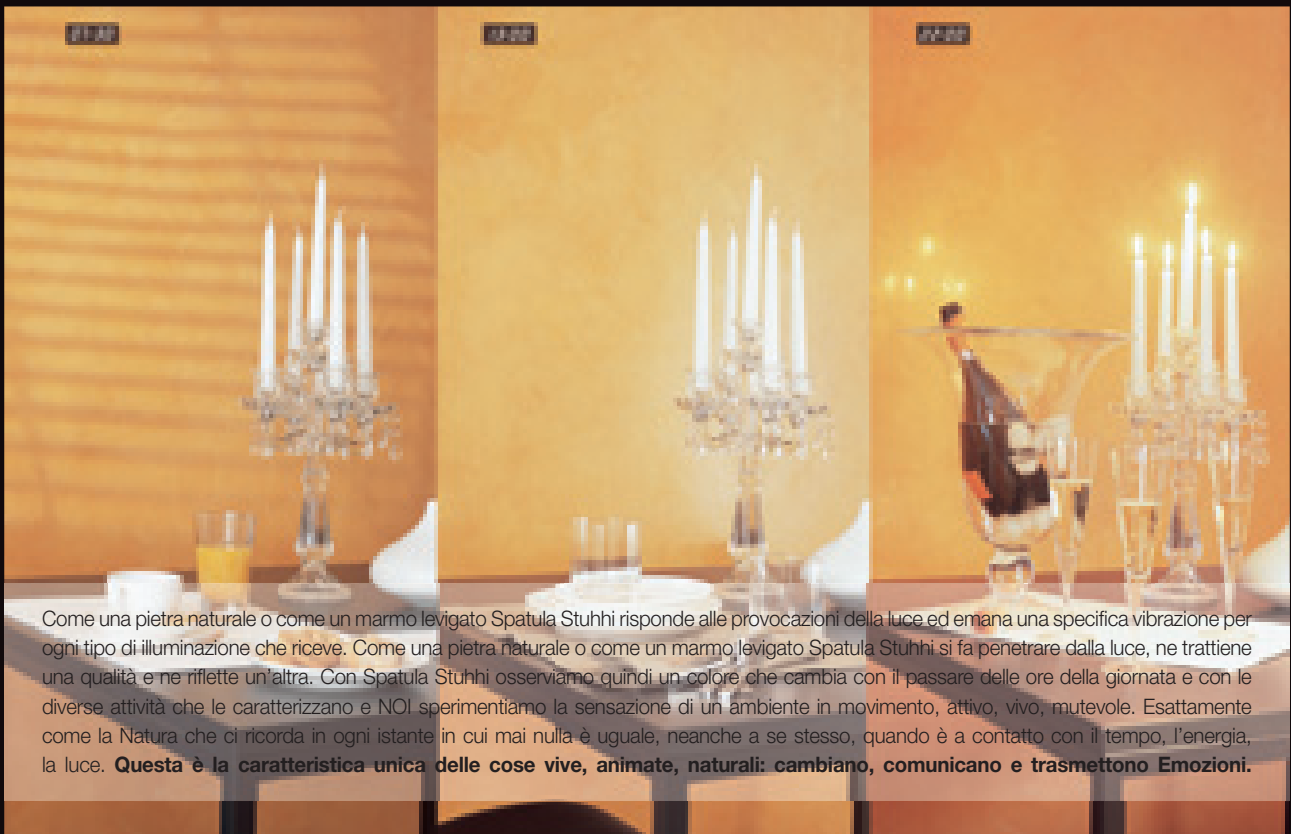
WASCHBARKEIT: Das Produkt ist in dessen normalen Version nicht waschbar. Im Gegenteil ist dessen beste Eigenschaft dessen Kapazität zu transpirieren. In Bereichen, in denen eine Waschbarkeit notwendig ist, empfehlen wir einen Schutz mit del Vecchio Wachs.

WIEDERANSTRICH: Nach vielen Jahren kann es sein, dass man SPATULA STUH-HI entweder mit SPATULA STUH-HI selbst oder mit anderen Produkten ersetzen möchte. Dies ist sehr einfach; folgendes ist zu tun: - Auf geeignete Weise abschmirgeln bis man die oberflächliche Leuchtkraft beseitigt hat. - Nochmals SPATULA STUH-HI oder Dispersionsfarben oder andere ohne jegliche Probleme direkt auftragen.

TROCKNUNGSZEIT: Nach circa 12-14 Stunden bei +20°C (273 K) und mit einer relativen Feuchtigkeit von 65% behandelbar. Vollkommene Trocknung nach 28 Tagen.

CONSERVIERUNG: In einem trockenen Bereich, vor Frost und Feuchtigkeit geschützt.

SICHERHEITSNORMEN: Die Augen und die Haut vor Produktspritzern schützen.



Come una pietra naturale o come un marmo levigato Spatula Stuhhi risponde alle provocazioni della luce ed emana una specifica vibrazione per ogni tipo di illuminazione che riceve. Come una pietra naturale o come un marmo levigato Spatula Stuhhi si fa penetrare dalla luce, ne trattiene una qualità e ne riflette un'altra. Con Spatula Stuhhi osserviamo quindi un colore che cambia con il passare delle ore della giornata e con le diverse attività che le caratterizzano e NOI sperimentiamo la sensazione di un ambiente in movimento, attivo, vivo, mutevole. Esattamente come la Natura che ci ricorda in ogni istante in cui mai nulla è uguale, neanche a se stesso, quando è a contatto con il tempo, l'energia, la luce. **Questa è la caratteristica unica delle cose vive, animate, naturali: cambiano, comunicano e trasmettono Emozioni.**

Cera del Vecchio

Una antica miscela di Cera e Saponi, amalgamata naturalmente a caldo, dà a Spatula Stuhli il sapore e la trasparenza del Marmo Levigato. La Cera del Vecchio viene applicata a mano con un panno ed aumenta notevolmente la resistenza e lavabilità della superficie.

Es un estuco lúcido, natural, de larga curación y de alta calidad; polvos de mármol y aditivos dan al producto una gran adherencia al soporte y una óptima fluidez en el momento de la aplicación, obteniendo el acabado rápidamente. SPATULA STUHHI es un revestimiento totalmente ecológico y no contiene disolventes. Está compuesto completamente de agua por lo tanto no inflamable. Consumo ideal en las 3 Manos: 1 kg per m².

LAVADO: el producto en su versión normal no es lavable. Es más, su mejor característica es la transpirabilidad. En zonas donde sea necesario el lavado recomendamos la protección con Cera del Vecchio.

VOLVER A BARNIZAR: después de muchos años se podrá decidir substituir con la misma o con otros productos. Es muy sencillo. E aquí que se debe hacer: lijar adecuadamente hasta eliminar la lucidez superficial, aplicar directamente de nuevo SPATULA STUHHI, pintura al agua u otro sin ningún problema.

TIEMPO DE SECADO: tratable después de 12-14 horas aproximadamente a +20°C (273 K) y con una humedad relativa del 65%. Secado total después de 28 días.

CONSERVACION: en un lugar seco, fresco, a resguardo del hielo y de la humedad.

NORMAS DE SEGURIDAD: proteger los ojos y la piel de las salpicaduras del producto.

Este un stuc lucios, natural, cu perioadă de maturare lungă, de foarte bună calitate; pulberile de marmură și aditivii conferă produsului o adeziune ridicată la substrat și o fluiditate excelentă în timpul aplicării, care permite o finisare rapidă. SPATUL STUHHI este un material de îmbrăcare complet ecologic care nu conține solvenți. Este realizat în întregime pe bază de apă, deci neinflamabil prin însăși natura sa. Consum ideal la cele 3 straturi: 1 kg la mp.

LAVABILITATE: În versiunea sa standard, produsul nu este lavabil. Mai mult, calitatea sa cea mai importantă este transpirabilitatea. În zonele în care este necesară lavabilitatea, recomandăm protecția cu Cera del Vecchio.

REVOPSIRE: După mai mulți ani, poate decideți să înlocuiți SPATULA STUHHI cu un alt fel de SPATULA STUHHI sau cu alte produse. Este foarte simplu, iată ce trebuie să faceți: Șlefuiți atât cât este necesar pentru a elimina stratul lucios superficial. Aplicați direct tot SPATULA STUHHI sau vopsele pe bază de apă sau alte produse, fără niciun risc.

TIMP DE USCARE: Se poate atinge după circa 12-14 ore la +20 °C (273 K) și la o umiditate relativă de 65%. Uscare completă după 28 de zile.

PĂSTRARE: În loc uscat, răcoros, ferit de îngheț și de umiditate.

STANDARDE DE SIGURANȚĂ: Feriți ochii și pielea de stropire cu produs.

Αυτό είναι ένα φυσικό, γυαλιστερό, υψηλής ποιότητας stucco που έχει ωριμάσει για ένα μεγάλο χρονικό διάστημα. Πολύ λεπτά στοιχεία λευκού μαρμάρου και άλλα πρόσθετα κάνουν το προϊόν ιδιαίτερα κολλητικό και ρευστό κατά την εφαρμογή, φτάνοντας στο τελικό στάδιο πολύ γρήγορα. Το SPATULA STUHHI είναι ένα απόλυτα οικολογικό προϊόν και δεν περιέχει διαλύτες. Είναι προϊόν με βάση το νερό συνεπώς, μη εύφλεκτο.

Ιδανική Κάλυψη σε 3 στρώματα: 1 kg ανά m².

Πλύση: Το προϊόν δεν πλένεται στην κανονική του μορφή. Αντιθέτως, το καλύτερο χαρακτηριστικό γνώρισμα είναι ότι μπορεί να ανανεωθεί. Στις περιοχές όπου είναι απαραίτητη η πλύση ή αν έρχεται σε συνεχή επαφή με το νερό σας συνιστούμε την προστασία του με το κερί προστασίας Cera del Vecchio.

Επαναβαφή: Μετά από πολλά χρόνια μπορεί να αποφασίσετε να αντικαταστήσετε το SPATULA STUHHI είτε με SPATULA STUHHI ή με άλλα προϊόντα.

Είναι πολύ απλό, απλά: - Τρίψτε με γυαλόχαρτο μέχρι η επιφάνεια να χάσει την γυαλάδα της. Εφαρμόστε SPATULA STUHHI και πάλι, άλλο χρώμα με βάση το νερό ή οποιοδήποτε άλλο προϊόν, άμεσα χωρίς κανένα πρόβλημα.

Χρόνος στεγνώματος: στεγνό μετά από περίπου 12-14 ώρες στους +20 ° C (273 K) και με μια σχετική υγρασίας 65%. Τελείως στεγνό μετά από 28 ημέρες.

Συτήρηση: Σε ένα στεγνό, όρσορό μέρος, μακριά από παγετό και υγρασία.

Κανονισμοί ασφαλείας: Προστατέψτε τα μάτια και το δέρμα από το πιπίλισμα με το προϊόν.

FORMULE

I colori riportanti nelle precedenti pagine si ottengono miscelando i nostri Additivi seguendo questa tabella.

Colors presented in the previous pages are obtained by mixing our Additives in accordance with the following table.

Les couleurs reportées dans les pages précédentes s'obtiennent en mélangeant nos additifs en fonction du présent tableau.

Die auf den vorherigen Seiten angegebenen Farben werden erzielt, indem unsere Zusatzstoffe dieser Tabelle entsprechend gemischt werden.

Los colores mostrados en las páginas anteriores se obtienen mezclando nuestros Aditivos siguiendo esta tabla.

Culorile indicate în paginile precedente se obțin amestecând Aditivii noștri conform tabelului de mai jos.

Για τα χρώματα που αναφέρονται στις προηγούμενες σελίδες πρέπει να αναμειγνύονται οι πρόσθετες ύλες μας ακολουθώντας αυτό το πίνακα.

S1: 1001/8 + 0,750 Colore	S2: 1001/24 + 0,750 Colore
S3: 1001/8 + 0,062 Colore	S4: 1001/24 + 0,062 Colore

Preparazione: Primus Naturale

CONSUMI

I consumi nell'applicazione possono variare in base alle superfici e agli assorbimenti. La media dei consumi è riportata in questa tabella.

Amounts needed for application can vary based upon surface and absorption properties. The average consumption is listed in the table below.

Les données relatives à la consommation en cours d'application sont reportées dans le tableau suivant. La consommation moyenne y est indiquée.

Der Verbrauch bei der Anwendung kann je nach Oberfläche und Absorption variieren. Der Durchschnittsverbrauch ist in dieser Tabelle angegeben.

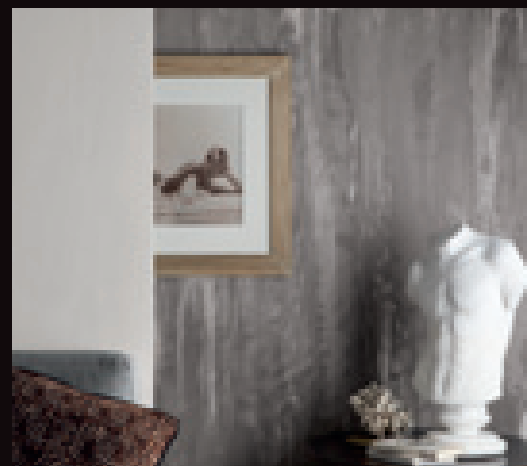
El consumo en cada aplicación puede variar dependiendo de la superficie y la absorción. El consumo medio se muestra en esta tabla.

În timpul aplicării, consumul poate varia în funcție de suprafață și de capacitatea de absorbție a acesteia. Media consumurilor este indicată în acest tabel.

Η κατανάλωση στην εφαρμογή μπορεί να διαφέρει ανάλογα με τις επιφάνειες και τις απορροφήσεις. Η μέση κατανάλωση αναφέρεται σε αυτό το πίνακα.

Consumi - Coverage - Consommation - Ergiebigkeit - Consumos - Consumul - ΑΠΟΔΟΣΗ		
Primus Naturale 6/7 mq/l	Spatula Stuhhi 1 kg/mq	Cere 20/30 g/mq
Confezioni da: 2, 8 e 24 Kg		Contenuto VOC: max 0 g/l

GIORGIO GRAESAN
and Friends



make
ART
not
WAR